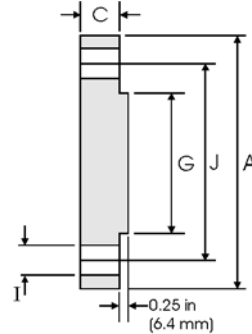
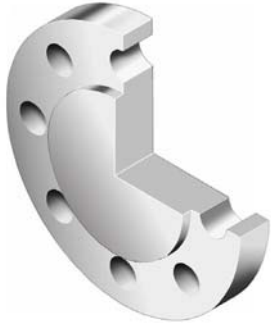




# Blind Flanges - ANSI B16.5



## Class 400 lb

Nominal Pipe Size	Pipe	Flange Data			Raised Face	Drilling Data			Weight
		<b>A</b>	<b>C</b>	<b>G</b>	<b>H</b>	<b>I</b>	<b>J</b>		
	Outside Diameter	Overall Diameter	Flange Thickness min	Face Diameter	Number of Holes	Bolt Hole Diameter	Diameter of Circle of Holes	kg/piece	
	in mm	in mm	in mm	in mm		in mm	in mm		
1/2	0.840	3.750	0.560	1.380	4	0.620	2.620	0.76	
	21.30	95.20	14.20	35.10		15.70	66.55		
3/4	1.050	4.620	0.620	1.690	4	0.750	3.250	1.28	
	26.70	117.3	15.70	42.90		19.10	82.60		
1	1.315	4.880	0.690	2.000	4	0.750	3.500	1.60	
	33.40	123.9	17.50	50.80		19.10	88.90		
1 1/4	1.660	5.250	0.810	2.500	4	0.750	3.880	2.23	
	42.20	133.3	20.60	63.50		19.10	98.60		
1 1/2	1.900	6.120	0.880	2.880	4	0.880	4.500	3.25	
	48.30	155.4	22.30	73.15		22.40	114.3		
2	2.375	6.500	1.000	3.620	8	0.750	5.000	4.15	
	60.30	165.1	25.40	91.90		19.10	127.0		
2 1/2	2.875	7.500	1.120	4.120	8	0.880	5.880	6.13	
	73.00	190.5	28.40	104.6		22.40	149.4		
3	3.500	8.250	1.250	5.000	8	0.880	6.620	8.44	
	88.90	209.5	31.70	127.0		22.40	168.1		
3 1/2	4.000	9.000	1.380	5.500	8	1.000	7.250	11.0	
	101.6	228.6	35.00	139.7		25.40	184.2		
4	4.500	10.00	1.380	6.190	8	1.000	7.880	13.7	
	114.3	254.0	35.10	157.2		25.40	200.2		
5	5.563	11.00	1.500	7.310	8	1.000	9.250	18.5	
	141.3	279.4	38.10	185.7		25.40	235.0		
6	6.625	12.50	1.620	8.500	12	1.000	10.62	25.5	
	168.3	317.5	41.10	215.9		25.40	269.7		
8	8.625	15.00	1.880	10.62	12	1.120	13.00	42.6	
	219.1	381.0	47.80	269.7		28.40	330.2		
10	10.75	17.50	2.120	12.75	16	1.250	15.25	64.5	
	273.0	444.5	53.80	323.9		31.75	387.4		
12	12.75	20.50	2.250	15.00	16	1.380	17.75	94.30	
	323.8	520.7	57.15	381.0		35.10	450.9		
14	14.00	23.00	2.380	16.25	20	1.380	20.25	124	
	355.6	584.2	60.45	412.8		35.10	514.4		
16	16.00	25.50	2.500	18.50	20	1.500	22.50	162	
	406.4	647.7	63.50	469.9		38.10	571.5		
18	18.00	28.00	2.620	21.00	24	1.500	24.75	205	
	457.2	711.2	66.55	533.4		38.10	628.7		
20	20.00	30.50	2.750	23.00	24	1.620	27.00	254	
	508.0	774.7	69.85	584.2		41.10	685.8		
24	24.00	36.00	3.000	27.25	24	1.880	32.00	386	
	609.6	914.4	76.20	692.2		47.80	812.8		

### Notes

- Weights are based on manufacturer's data and are approximate.
- For ring joint facings see page 8-6.
- For tolerances see page 8-4.