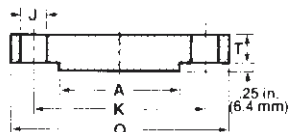
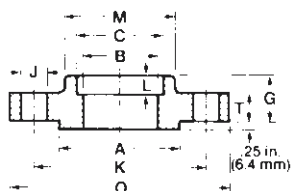


NPS	DN	FLANGE OUTSIDE DIAMETER O	FLANGE ² THICKNESS MIN. T	RAISED FACE DIA. A	BORE			LENGTH TRU HUB ²			
					WELDING NECK & 'SOCKET WELDING B	SLIP-ON & 'SOCK. WELD. SOCKET MIN. C	LAP JOINT MIN. D	THREADED COUNTER- BORE MIN. E	WELDING NECK F	SLIP-ON, THREADED 'SOCKET WELDING G	LAP JOINT H
1/2		3.75	.56	1.38		.88	.90	.93	2.06	.88	.88
	15	95	14.5	34.9		22.2	22.9	23.5	52.4	22	22
3/4		4.62	.62	1.69		1.09	1.11	1.14	2.25	1.00	1.0
	20	117	16.0	42.9		27.8	28.2	29.0	57.1	25	25
1		4.88	.69	2.0		1.36	1.38	1.41	2.44	1.06	1.06
	25	124	17.5	50.8		34.5	34.9	36.0	61.9	27	27
1 1/4		5.25	.81	2.5		1.70	1.72	1.75	2.62	1.12	1.12
	32	133	21.0	63.5		43.3	43.7	44.5	66.7	29	29
1 1/2		6.12	.88	2.88		1.95	1.97	1.99	2.75	1.25	1.25
	40	156	22.5	73.0		49.6	50.0	50.5	69.8	32	32
2		6.5	1.0	3.62		2.44	2.46	2.50	2.88	1.44	1.44
	50	165	25.5	92.1		61.9	62.5	63.5	73.0	37	37
2 1/2		7.5	1.12	4.12		2.94	2.97	3.00	3.12	1.62	1.62
	65	191	29.0	104.8		74.6	75.4	76.0	79.4	41	41
3		8.25	1.25	5.0		3.57	3.60	3.63	3.25	1.81	1.81
	80	210	32.0	127.0		90.7	91.4	92.0	82.5	46	46
3 1/2		9.0	1.38	5.5		4.07	4.10	4.13	3.38	1.94	1.94
	90	229	35.0	139.7		103.4	104.1	105	85.7	49	49
4		10.75	1.5	6.19		4.57	4.60	4.63	4.0	2.12	2.12
	100	273	38.5	157.2		116.1	116.8	118	101.6	54	54
5		13.0	1.75	7.31		5.66	5.69	5.69	4.5	2.38	2.38
	125	330	44.5	185.7		143.7	144.5	145	114.3	60	60
6		14.0	1.88	8.5		6.72	6.75	6.75	4.62	2.62	2.62
	150	356	48.0	215.9		170.7	171.4	171	117.3	67	67
8		16.5	2.19	10.62		8.72	8.75	8.75	5.25	3.0	3.0
	200	419	55.5	269.9		221.5	222.2	222	133.3	76	76
10		20.0	2.5	12.75		10.88	10.92	10.88	6.0	3.38	4.38
	250	510	63.5	323.8		276.2	277.4	276	152.4	86	111
12		22.0	2.62	15.0		12.88	12.92	12.94	6.12	3.62	4.62
	300	560	66.5	381.0		327.0	328.2	329	155.6	92	117
14		23.75	2.75	16.25		14.14	14.18	14.19	6.5	3.69	5.0
	350	605	70.0	412.8		359.2	360.2	360	165.1	94	127
16		27.0	3.0	18.5		16.16	16.19	16.19	7.0	4.19	5.5
	400	685	76.5	469.9		410.4	411.2	411	177.5	106	140
18		29.25	3.25	21.0		18.18	18.20	18.19	7.25	4.62	6.0
	450	745	83.0	533.4		461.8	462.3	462	184.1	117	152
20		32.0	3.5	23.0		20.20	20.25	20.19	7.5	5.0	6.4
	500	815	89.0	584.2		513.1	514.3	513	190.5	127	165
24		37.0	4.0	27.25		24.25	24.25	24.19	8.0	5.5	7.25
	600	940	102.0	692.2		615.9	615.9	614	203.2	140	184

¹ Socket Welding Flanges, sizes NPS 3 1/2 (DN 90) and larger are not covered by ASME/ANSI B16.5.

² Does not include .25" (6.4 mm) raised face.



CLASS 600 (PN 100) FLANGES

FORGED STEEL ASTM A-105 ASME/ANSI B16.5

NPS	DN	DRILLING			'DEPTH OF SOCKET	DIAMETER OF HUB			APPROXIMATE WEIGHT			
		NO. OF HOLES	DIA. OF HOLES J	DIA. OF BOLT CIRCLE K		AT BASE M	AT CHAMFER N	LAP JOINT FILLET RADIUS r	WELDING NECK	SLIP-ON, THREADED & SOCKET WELDING ¹	BLIND	LAP JOINT
1/2		4	.62	2.62	.38	1.5	.84	.12	2	2	2	2
	15	4	16	66.7	10	38.1	21.4	3	0.9	0.9	0.9	0.9
3/4		4	.75	3.25	.44	1.88	1.05	.12	4	3	3	3
	20	4	20	82.5	11	47.6	26.6	3	1.8	1.4	1.4	1.4
1		4	.75	3.5	.50	2.12	1.32	.12	4	4	4	4
	25	4	.20	88.9	13	54.0	33.5	3	1.8	1.8	1.8	1.8
1 1/4		4	.75	3.88	.56	2.5	1.66	.19	6	5	5	5
	32	4	20	98.4	14	63.9	42.1	5	2.7	2.3	2.3	2.3
1 1/2		4	.88	4.5	.62	2.75	1.90	.25	8	7	8	7
	40	4	23	114.3	16	69.8	48.3	6	3.6	3.2	3.6	3.2
2		8	.75	5.0	.69	3.31	2.38	.31	12	9	10	9
	50	8	20	127.0	17	84.1	60.3	8	5.4	4.1	4.5	4.1
2 1/2		8	.88	5.88	.75	3.94	2.88	.31	18	13	15	12
	65	8	23	149.2	19	100.0	73.0	8	8.2	5.9	6.8	5.4
3		8	.88	6.62	.81	4.62	3.50	.38	23	16	20	15
	80	8	23	168.3	21	117.5	88.9	10	10.4	7.3	9.1	6.8
3 1/2		8	1.0	7.25	-	5.25	4.00	.38	26	21	29	20
	90	8	26	184.1	-	133.3	101.6	10	11.8	9.5	13.2	9.1
4		8	1.0	8.5	-	6.0	4.50	.44	42	37	41	36
	100	8	26	215.9	-	152.4	114.3	11	19.0	16.8	18.6	16.3
5		8	1.12	10.5	-	7.44	5.56	.44	68	63	68	61
	125	8	29	266.7	-	188.9	141.3	11	31.0	28.6	30.8	27.7
6		12	1.12	11.5	-	8.75	6.63	.50	81	80	86	78
	150	12	29	292.1	-	222.2	168.3	13	36.7	36.3	39.0	35.4
8		12	1.25	13.75	-	10.75	8.63	.50	120	115	140	110
	200	12	32	349.2	-	273.0	219.1	13	54.4	52.2	63.5	49.9
10		16	1.38	17.0	-	13.5	10.75	.50	190	170	230	170
	250	16	35	431.8	-	342.9	273.0	13	86.2	77.1	104	77.2
12		20	1.38	19.25	-	15.75	12.75	.50	225	200	295	200
	300	20	35	488.9	-	400.0	323.8	13	102	90.7	134	90.7
14		20	1.50	20.75	-	17.0	14.0	.50	280	230	355	250
	350	20	39	527.0	-	431.8	355.6	13	127	104	161	113
16		20	1.62	23.75	-	19.5	16.0	.50	390	330	495	365
	400	20	42	603.2	-	495.2	406.4	13	177	150	225	166
18		20	1.75	25.75	-	21.5	18.0	.50	475	400	630	435
	450	20	45	654.0	-	546.1	457.2	13	215	181	286	197
20		24	1.75	28.5	-	24.0	20.0	.50	590	510	810	570
	500	24	45	723.9	-	609.6	508.0	13	268	231	367	259
24		24	2.0	33.0	-	28.25	24.0	.50	830	730	1250	810
	600	24	51	838.2	-	717.5	609.6	13	376	331	567	367

POUNDS
KILOGRAMS