

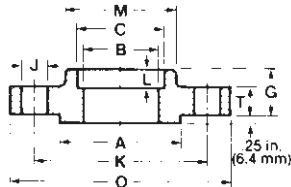
NPS	DN	FLANGE OUTSIDE DIAMETER O	FLANGE ² THICKNESS MIN. T	RAISED FACE DIA. A	BORE			LENGTH TRU HUB ²			
					WELDING NECK & 'SOCKET WELDING B	'SLIP-ON & 'SOCK. WELD. SOCKET MIN. C	LAP JOINT MIN. D	THREADED COUNTER- BORE MIN. E	WELDING NECK F	'SLIP-ON, THREADED, 'SOCKET WELDING G	LAP JOINT H
1/2		4.75	.88	1.38	To be specified by purchaser	0.88	.90	.93	2.38	1.25	1.25
	15	121	22.5	34.9		22.2	22.9	23.5	60.3	32	32
3/4		5.12	1.00	1.69		1.09	1.11	1.14	2.75	1.38	1.38
	20	130	25.5	42.9		27.8	28.2	29.0	69.8	35	35
1		5.88	1.12	2.00		1.36	1.38	1.41	2.88	1.62	1.62
	25	149	29.0	50.8		34.5	34.9	36.0	73.0	41	41
1 1/4		6.25	1.12	2.50		1.70	1.72	1.75	2.88	1.62	1.62
	32	159	29.0	63.5		43.3	43.7	44.5	73.0	41	41
1 1/2		7.00	1.25	2.88		1.95	1.97	1.99	3.25	1.75	1.75
	40	178	32.0	73.0		49.6	50.0	50.5	82.5	44	44
2		8.50	1.50	3.62		2.44	2.46	2.50	4.00	2.25	2.25
	50	216	38.5	92.1		61.9	62.5	63.5	101.6	57	57
2 1/2		9.62	1.62	4.12		2.94	2.97	3.00	4.12	2.50	2.50
	65	244	41.5	104.8		74.6	75.4	76.0	104.8	64	64
3		10.50	1.88	5.00		-	3.60	3.63	4.62	2.88	2.88
	80	267	48.0	127.0		-	91.4	92.0	117.5	73	73
4		12.25	2.12	6.19		-	4.60	4.63	4.88	3.56	3.56
	100	311	54.0	157.2		-	116.8	118	123.8	90	90
5		14.75	2.88	7.31		-	5.69	5.69	6.12	4.12	4.12
	125	375	73.5	185.7		-	144.5	145	155.6	105	105
6		15.50	3.25	8.50		-	6.75	6.75	6.75	4.69	4.69
	150	394	83.0	215.9		-	171.4	171	171.4	119	119
8		19.00	3.62	10.62		-	8.75	8.75	8.38	5.62	5.62
	200	483	92.0	269.9		-	222.2	222	212.7	143	143
10		23.00	4.25	12.75		-	10.92	10.88	10.00	6.25	7.00
	250	585	108.0	323.8		-	277.4	276	254.0	159	178
12		26.50	4.88	15.00		-	12.92	12.94	11.12	7.12	8.62
	300	675	124.0	381.0		-	328.2	329	282.6	181	219
14		29.50	5.25	16.25	-	14.18	-	11.75	-	9.50	
	350	750	133.5	412.8	-	360.2	-	298.4	-	241	
16		32.50	5.75	18.50	-	16.19	-	12.25	-	10.25	
	400	825	146.5	469.9	-	411.2	-	311.1	-	260	
18		36.00	6.38	21.00	-	18.20	-	12.88	-	10.88	
	450	915	162.0	533.4	-	462.3	-	327.0	-	276	
20		38.75	7.00	23.00	-	20.25	-	14.00	-	11.50	
	500	985	178.0	584.2	-	514.3	-	355.6	-	292	
24		46.00	8.00	27.25	-	24.25	-	16.00	-	13.00	
	600	1170	203.5	692.2	-	615.9	-	406.4	-	330	

¹ Socket Welding and Slip-on Flanges, size NPS 3 1/2 (DN 80) and larger are not covered by ASME/ANSI B16.5.

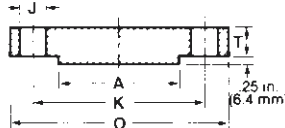
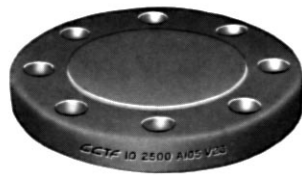
² Does not include .25" (6.4 mm) raised face.

INCHES
MILLIMETRES

SOCKET WELDING



BLIND



CLASS 1500 (PN 250) FLANGES

FORGED STEEL ASTM A-105 ASME/ANSI B16.5

NPS	DN	DRILLING			'DEPTH OF SOCKET	DIAMETER OF HUB			APPROXIMATE WEIGHT			
		NO. OF HOLES	DIA. OF HOLES	DIA. OF BOLT CIRCLE		AT BASE	AT CHAMFER	LAP JOINT FILLET RADIUS	WELDING NECK	'SLIP-ON, THREADED & 'SOCKET WELDING	BLIND	LAP JOINT
			J	K	L	M	N	r				
1/2	15	4	.88	3.25	.38	1.50	.84	.12	5	4	4	4
3/4	20	4	.88	3.50	.44	1.75	1.05	.12	6	5	6	5
1	25	4	1.00	4.00	.50	2.06	1.32	.12	9	8	8	8
1 1/4	32	4	1.00	4.38	.56	2.50	1.66	.19	10	9	9	9
1 1/2	40	4	1.12	4.88	.62	2.75	1.90	.25	13	12	13	12
2	50	8	1.00	6.50	.69	4.12	2.38	.31	25	25	25	25
2 1/2	65	8	1.12	7.50	.75	4.88	2.88	.31	36	36	35	35
3	80	8	1.25	8.00	-	5.25	3.50	.38	48	48	48	47
4	100	8	1.38	9.50	-	6.38	4.50	.44	73	73	73	75
5	125	8	1.62	11.50	-	7.75	5.56	.44	130	130	140	140
6	150	12	1.50	12.50	-	9.00	6.63	.50	165	165	160	170
8	200	12	1.75	15.50	-	11.50	8.63	.50	275	260	300	285
10	250	12	2.00	19.00	-	14.50	10.75	.50	455	435	510	485
12	300	16	2.12	22.50	-	17.75	12.75	.50	690	580	690	630
14	350	16	2.38	25.00	-	19.50	14.00	.50	940	-	975	890
16	400	16	2.62	27.75	-	21.75	16.00	.50	1250	-	1300	1150
18	450	16	2.88	30.50	-	23.50	18.00	.50	1625	-	1750	1475
20	500	16	3.12	32.75	-	25.25	20.00	.50	2050	-	2225	1775
24	600	16	3.62	39.00	-	30.00	24.00	.50	3325	-	3625	2825

POUNDS

KILOGRAMS